

**Mutual 15**

Twin Branches Drive  
Bramblewood Drive  
Bassett Lane  
Wallbrook Court  
Wentbridge Court  
Barningham Court  
Short Ridge Court  
Twin Branches Court

**Mutual 16**

Prince Frederick Way  
Parker Creek Lane  
Solomons Court  
St. Leonard Court  
Island Creek Court

**Mutual 17A (The Fairways South)**

3330 N. Leisure World Blvd.

**Mutual 17B (The Fairways North)**

3310 N. Leisure World Blvd.

**Mutual 18**

Fitzhugh Lane  
Fitzhugh Court  
Tarkington Lane  
Hackney Lane

**Mutual 19A**

Pine Orchard Drive

**Mutual 19B**

Beaverbrook Court  
Elkridge Way

**Mutual 20A (The Greens Bldg 1 & 2)**

15101 Interlachen Drive (Bldg 1)  
15107 Interlachen Drive (Bldg 2)

**Mutual 20B (The Greens Bldg 3 & 4)**

15115 Interlachen Drive (Bldg 3)  
15100 Interlachen Drive (Bldg 4)

**Mutual 21 (Turnberry Courts)**

2904 N. Leisure World Blvd. (Bldg 1)  
2900 N. Leisure World Blvd. (Bldg 2)  
3005 N. Leisure World Blvd. (Bldg 3)

**Mutual 22 (The Pines)**

2921 N. Leisure World Blvd.

**Mutual 23 (Vantage West)**

3210 N. Leisure World Blvd

**Mutual 24 (Vantage East)**

3200 N. Leisure World Blvd.

**Mutual 26 (The Overlook)**

3100 Leisure World Blvd.

**Mutual 27 (Creekside)**

Mid rise apartments

*Fee Simple Mutual*

**Mutual 25 (The Regency)**

Glen Eagles Drive  
Glen Eagles Court



## *More about Fees*

When looking at monthly fees, it is important to realize the difference between **co-op** fees and **condo** fees.

The **co-op** monthly fee includes the underlying mortgage principal (soon to be paid off), interest, taxes, insurance (PITI), all utilities (except telephone), master insurance, trash removal, water, reserve funds, and appliance repair and replacement (except telephone).

In the **condos** the fee includes master insurance, trash removal, water, and reserve funds. In some units electricity is included, but in the newer mid-rise and high-rise buildings the condo fee does not include electricity or gas. The buyer should check with the individual mutual or their realtor to determine exactly what the fee covers.

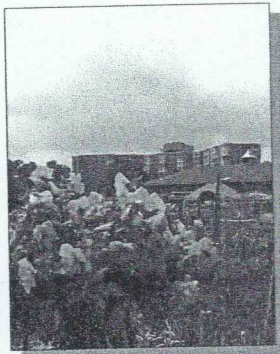
### **Please Note:**

At time of settlement on a condo, the buyer is required to pay 2% (two percent) of the purchase price as a contribution to the Resale Improvement Fund and a \$350.00 (three hundred and fifty dollar) transfer charge.

A buyer of a co-op unit must pay:

- 1) 2% (two percent) of the purchase price or \$500.00 (five hundred dollars), whichever is greater, as a contribution to the Resale Improvement Fund.
- 2) \$500.00 (five hundred dollars) transfer charge.
- 3) \$250.00 (two hundred and fifty dollars) settlement fee to Bank of America for cash sales. If financed, settlement fees will be determined by the settlement company.

All **purchasers**, either fee simple, condo or co-op, **will be provided with complete documentation of all the By-Laws and Rules and Regulations.**



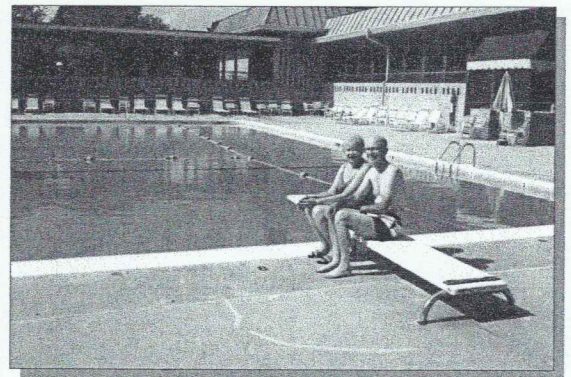


## *Leisure and Recreation*

Leisure MD has a great variety of recreational facilities and activities. These include two clubhouses, swimming pools, tennis, 18 hole golf course, bowling, game rooms, a theater group, more than 65 clubs, seminars, and classes.

Some of these facilities require a nominal fee over and above the monthly recreational facilities fee.

(See attached fee schedule for details)





## Organizations and Activities

African American Association  
Amateur Radio

AARP

Alzheimers Support Group

Art Guild

L. W. Ballroom Dance Club

Pocket Billiard Club

Bingo

Book Review

Bowling - Duckpin

- Lawn

Blood Pressure

B'nai B'rith

Bridge - Duplicate Tues. Eve.

Prog. Pair Wed. Eve.

Ladies' Thurs. Afternoon

Friday Night

Men's

Camera Club/Slide Matinee

500 Card Club or Pinochle

Catholic Daughters of America

Ceramicrafters

Chess Club

Clipper Workshop

Comedy and Humor Club

Computer Learning Center

Dancing

Democrats

Enamellers

Flags

Fireside Forum

Formidation of L.W.

Fun & Fancy

Garden & Environmental Club

Garden Plot Committee

Genealogy Group

Going It Alone Group

Golf President

Women & 9-Hole

Women 18-Hole

Men 18-Hole

Great Books

Great ideas

Hadassah

Hearing Impaired Group

Hiking Club

Homemakers

Inter-Faith Chapel Office

Inter-Faith Council

Inter-Faith Women

Italian Club

Jewish Residents

Kiwanis of Leisure World

Kiwanis of Rossmoor

Kiwaniannes

Lapidary & Mineral Club

League of Women Voters

Leisure World Lions

Leisure World Seminars

Library Guild

Masonic Club

Meals on Wheels

Music Lovers Organ Club

Harmonizers

Men's Prayer Breakfast

MOWW

Military Club

Narfe

Na'amat

U.S.A.

ORT

Order of the Ribbon

Philantropic Educators Org.

Parkinsons' Support Group

Rossmoor Republicans

Rossmoor Tennis Club

Rossmoor Woman's Club

Seniors Against Nuclear Arms (SANA)

Stamp Collectors

Top Banana Clowns

Unitarian Universalists of L.W.

Visually Impaired

Voter Registration

Welcoming Committee

Woman's Prayer & bible Study

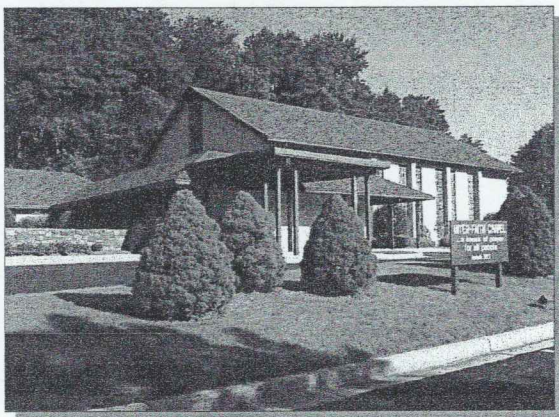
Woodshop

Writer's Workshop

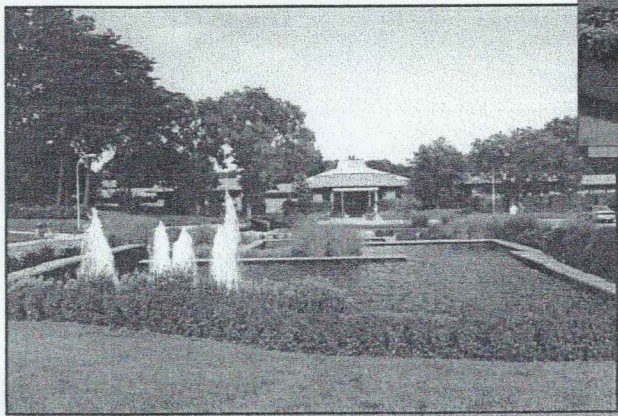


# Services

Among the numerous services available are a 24 hour security guard for control access and patrol, a post Office and a Medical Center.



There is an Interfaith Chapel where services of various faiths are held on a regular basis. A Catholic Church is located just outside the Norbeck Rd. gate.



*Clubhouse I* contains a restaurant, snack bar and hobby shops. *Clubhouse II* contains an indoor swimming pool, auditorium, a fully equipped exercise room, billiards room, computer room, and more.



# The Leisure World Plaza

Shuttle buses and Metro buses run on a regular schedule to area medical and shopping facilities.

There is a full-service shopping center at the main entrance known as *Leisure World Plaza*. Stores include...*Giant Food*, various banks, restaurants, *Weichert Realtors*, a full service *Post Office* and many specialty shops. There is also a professional office building containing medical offices.

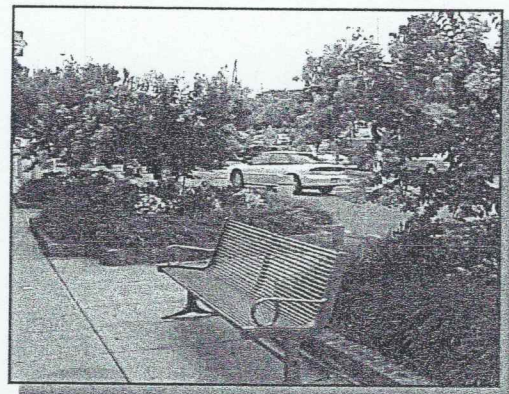




# Thank You

for affording *Weichert Realtors*  
the opportunity to work with you.

We hope this publication will assist you in becoming familiar with the *Leisure MD Community*. We are confident that we will successfully assist you in finding the home you want. Floor plans of the various units are available in our office, which will help you in preparation for our visits with you into the Community.



*Weichert, Realtors*  
*Aspen Hill Leisure World Plaza*  
*3816 International Drive*  
*Silver Spring, Maryland 20906*  
*(301) 681-0550*